

# Hand Sewing

## Dinosaur Finger Puppet



### Supplies:

Felt Pieces

(2 dragon body and 1 dragon spikes)

Google Eyes

Needle

Thread

Scissors

Glue

### Skills:

Thread needle

Tie knot

Straight stitch

Cut thread/felt pieces

1. Thread your needle and tie a knot at the end of the thread.



2. Lay out your cut felt pieces. You should have 2 body pieces and 1 spike

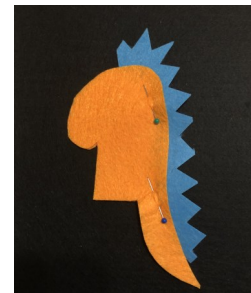


3. Layer your pieces.

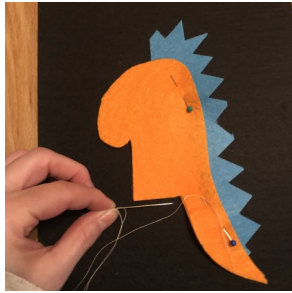
A. Body

B. Scales at the edge

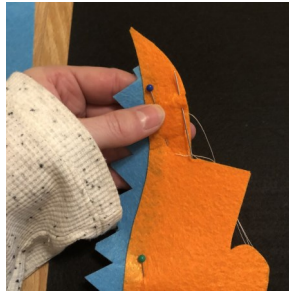
C. Body



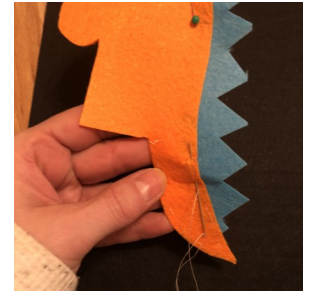
3. You can use straight needles to keep the scales in place. They will be sandwiched between the body parts.



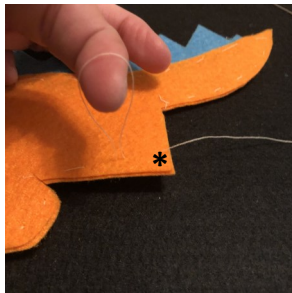
4. Start at this corner and make your first stitch. Once you come through the back tie a knot.



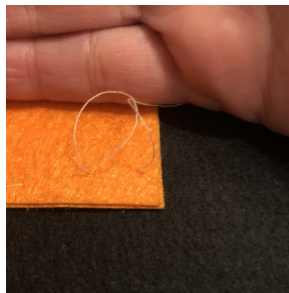
5. Use the running stitch and start sewing the tail. Remove straight pins as you go, if you used them.



6. Continue the running stitch around the edge of the dinosaur.



7. Stop sewing when you get to the corner marked with \*. You want to leave the bottom open for your finger,.



8. Tie a knot and cut the end.



9. Add eyes and a marker for a mouth.  
Enjoy your finger puppet.